



SALEM

FABRICATION SUPPLIES

ABRASIVES | GLAZING SUPPLIES | LAMINATING SUPPLIES | MATERIAL HANDLING

ABRASIVES

Sanding Belts & Discs

Salem's abrasive belts and discs are specifically designed for grinding glass. In all of these grinding applications, our belts and discs improve productivity by increasing the number of inches ground per belt or disc. They reduce surface damage and scratch patterns and do not deteriorate as quickly as other products. You not only receive more productivity from the abrasive itself but they also allow you to use your equipment more efficiently. There are fewer belt changes – less down time.

We have listed the most popular industry standard S181 sizes. Additional options and custom sizes are available upon request.

Sanding Discs

Plain with Arbor Hole

Type	Size	Grit
WET/DRY	5 x 7/8"	60
		80
		100
		120
		220
		400
	600	
	CORK	
	6 x 3/4"	60
		80
		100
		120
220		
400		
600		
CORK		
6 x 7/8"	60	
	80	
	100	
	120	
	220	
	400	
600		
CORK		
7 x 7/8"	60	
	80	
	100	
	120	
	220	
	400	
600		
CORK		

Sanding Discs

PSA

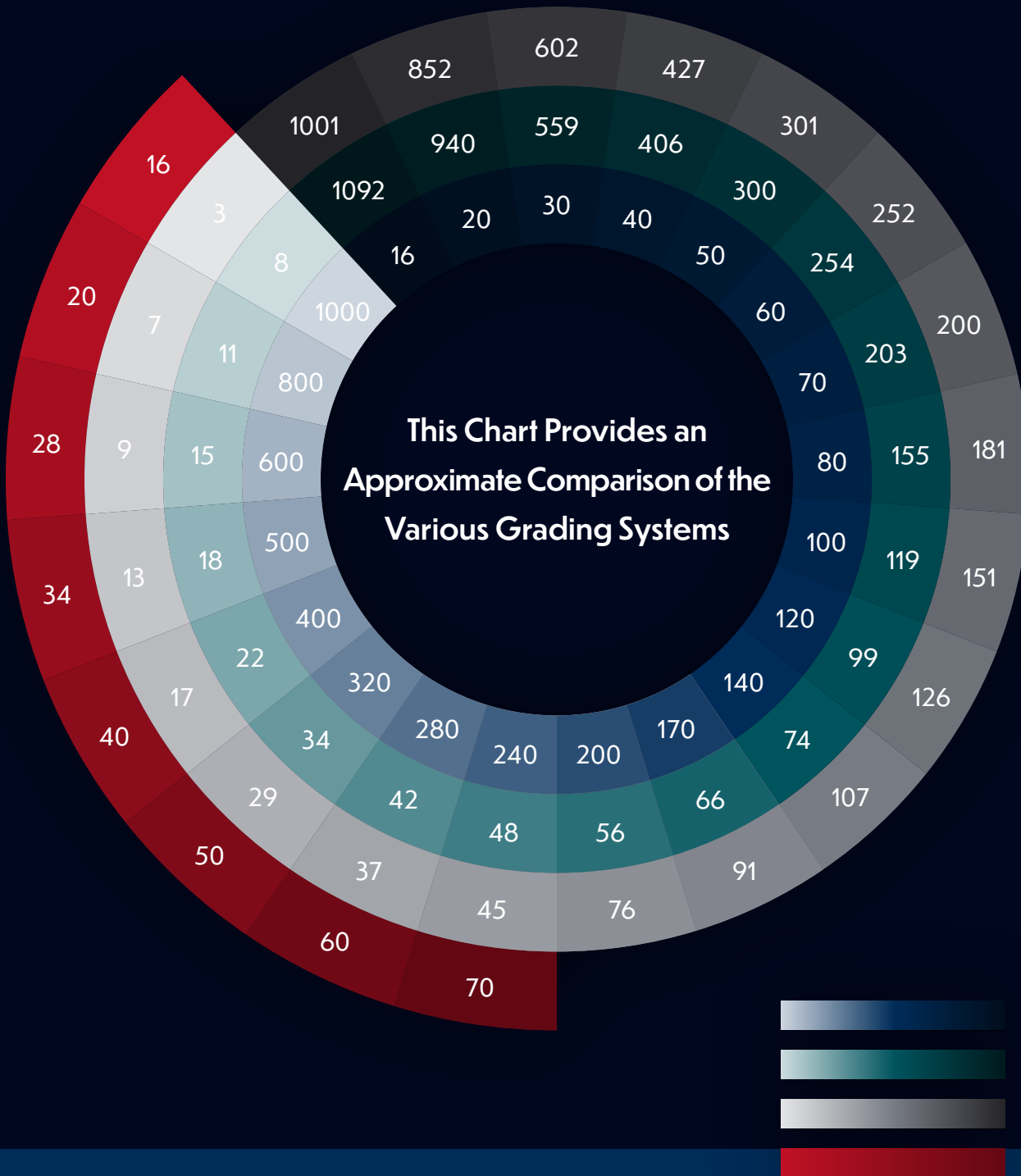
Type	Size	Grit
Wet/Dry	5"	60
		80
		100
		120
		220
		400
	600	
	CORK	
	6"	60
		80
		100
		120
220		
400		
600		
CORK		

Sanding Belts

Industrial Cloth Backing

Type	Size	Grit
Wet/Dry	1 x 30"	60
		80
		100
		120
		220
		400
	600	
	CORK	
	1 1/8 x 21"	60
		80
		100
		120
220		
400		
600		
CORK		
Wet/Dry	3 x 21"	60
		80
		100
		120
		220
		400
	600	
	CORK	
	3 x 24"	60
		80
		100
		120
220		
400		
600		
CORK		
Wet/Dry	4 x 84"	60
		80
		100
		120
		220
		400
	600	
	CORK	
	4 x 106"	60
		80
		100
		120
220		
400		
600		
CORK		





ANSI
American National Standards Institute

FEPA
Federation of European Producers of Abrasives

JIS
Japanese Industrial Standard

Grit Size – the grit size, or particle size, is determined by the approximate number of openings in the final screen used to size the grain. Grit is approximately equal to the number of grains that when laid end to end will equal one inch. On grit numbers, the larger the number, the smaller the particle size.

Micron Size – The micron number is an actual measurement of the particle. One micron is equal to one millionth of a meter. On micron numbers, the smaller the number, the smaller the particle size.

GLAZING SUPPLIES

Salem Seal

Salem Seal is a high performance, non-staining 100% silicone sealant designed for interior and exterior glass applications.

- Great adhesion
- Non-sag
- Smooth consistency
- Excellent weather, ozone and chemical resistance
- Long life reliability
- Mildew resistant
- Low temperature flexibility and high temperature performance
- Meets FDA Regulation No. 21 CFR 177.2600, Federal Spec TT-S-00230C, NSF Standard 51, MIL-A-46106A Amend.2 and ASTM C-920

Aluminum	GS929CA
Black	GS929CBL
Clear	GS929CC
White.....	GS929CW
Clear - anti-mildew.....	GS929MRCC
4" Replacement Nozzle	929-18-NZ

Gray, Bronze and other colors available upon request.
All silicones are sold in case quantities only.



Gunther Mirror & More Cleaner

A superior all purpose mirror cleaner that is excellent in cleaning glass, porcelain, chrome, stainless steel, marble and appliances.

- Contains no vinegar or ammonia that can be harmful to mirrors
- Dissolves dirt, grease and most other deposits, leaving no film or streaks
- Environmentally safe, economical and refillable

Gunther Mirror & More Cleaner..... 930-18-DB



Gunther Ultra Bond Mirror Mastic

A high quality adhesive formulated to provide a strong, permanent bond between electro-copper-plated glass mirror and various substrates.

Gunther Ultra Bond Mirror Mastic.....GM900C



Nitty Gritty Gloves

Combining the industry's first wrinkle-finished, natural rubber-coated glove design with a Kevlar® liner, Nitty Gritty gloves are ideal for cut-resistant applications across a wide range of industries.

1 pairG66NF-10



Black Foam Tape

108 ft roll - 1/16" x 1/2" GT4B
 216 ft roll - 1/32" x 1/2"GTN2B



Green Felt Tabs

10,000/roll - 5/8" square x 1/16" thickFWT62



Black Butyl Tape

25 ft roll - 1/8" x 1/2"GTB206B



Cork Tabs

25,000/roll - 3/4" square x 1/8" thickFCT3418
 11,667/roll - 3/4" square x 1/4" thick FCT3414



Fletcher Hand Cutters

Professional quality, with hardened steel cutting wheel. 120-degree cutting angle for easier scoring of single or double strength glass, built-in break-out notches & tapping ball.

- Fletcher #2 Gold Tip Ball End.....GC616
- Fletcher #1 Gold Tip Straight End.....GC615



TOYO Hand Cutter

- TOYO Brass Straight Cutting Head.....GC601
- Replacement Head.....GC602



Razor Blades

Single edged, individually wrapped and oil free.

- 100/box.....MR8



Diamond Hand Pads

For touch-up work on glass

Perfect for hand lapping your glass surfaces for easy control and quick surface prep. The thick foam backing provides a comfortable ergonomic grip for long term grinding without fatigue.

- 70D070-02
- 120.....D120-02
- 220.....D220-02
- 400D400-02

Rapid Rabbit

The Rapid Rabbit is a ruggedly built, versatile portable polisher. This high quality tool was built for years of trouble free operation in the shop or on the job site. The Rapid Rabbit is built from a powerful ¾ hp Milwaukee frame and is equipped with a 7" all natural felt wheel for polishing with cerium oxide.

Rapid Rabbit030-11



Replacement Felt Wheel for Rapid Rabbit

Mirror Grade Wool
7" x 2" x 1" FWM7

Hand Fabrication Tools

For hole chamfering and scratch polishing

Contact Salem for more information.



Status

Status is a premium grade white cerium oxide based glass polishing compound. This high-quality polish is not suspension treated. Its special formulation makes it effective with both brush-on and scratch removal applications. Status yields extremely high stock removal while producing pristine surface finishes.

1 kilogram container..... CE410K



Scratch Removal Polishing Pad

Felt disc with hook and loop backing.

4" x .375" - 10 mm AH.....FD4VS

Core Drill Bits

Of all the variables that influence diamond core drill performance, surface speed (RPM) and the condition of the drill bit cutting surface have the greatest effect. Selecting the optimum speed is essential to diamond core drill performance and life. Utilizing the proper drill speed will increase productivity by reducing cycle times, breakage and down time for bit replacement. Drilling at the proper RPM will also extend the life of the core drill by allowing it to wear at the optimal rate. Contact Salem for the manufacturer recommended RPM for your drill.

Salem offers 69, 75 and 95 mm OAL core drills in a wide variety of diameters. Contact us for additional sizes and availability.



Adapter

Precision machined core drill adapter allows Belgium Mount core drills to be used with conventional drill press chuck. (3/8" min.) Increases overall length of core drill by approximately 1 1/8".

.....ADAPT-02-3



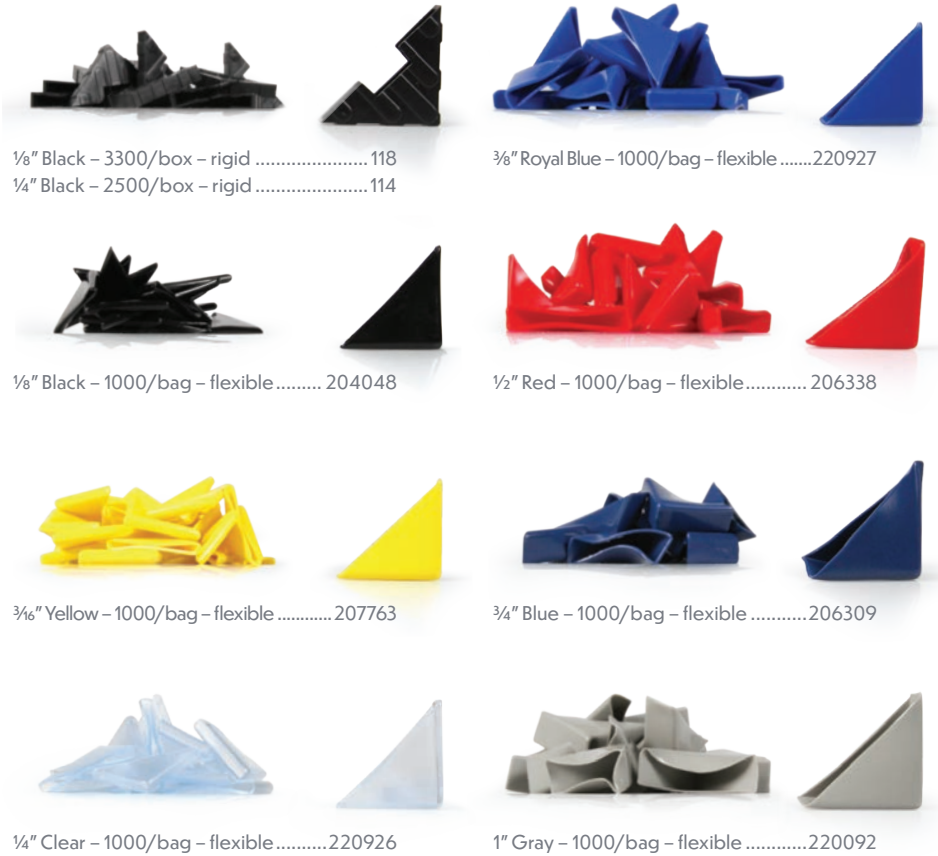
Extension

Solid brass, precision machined core drill extensions increase the overall length of any Belgium Mount core drill by 20 mm.

.....ADAPT-02-2

Glass Corner Protectors

This kind of inexpensive protection will pay for itself immediately by dramatically reducing glass breakage during handling, storage and shipping. Corner protectors are available in flexible and rigid styles and in color coded sizes to fit common glass sizes: 1/8" to 3/4".



1/8" Black - 3300/box - rigid 118
 1/4" Black - 2500/box - rigid 114

3/8" Royal Blue - 1000/bag - flexible 220927

1/8" Black - 1000/bag - flexible 204048

1/2" Red - 1000/bag - flexible 206338

3/16" Yellow - 1000/bag - flexible 207763

3/4" Blue - 1000/bag - flexible 206309

1/4" Clear - 1000/bag - flexible 220926

1" Gray - 1000/bag - flexible 220092

Invisible Shield® PRO 15 Nano-Scale Glass Coating

Invisible Shield® PRO 15 nano-scale glass coating represents a major breakthrough in glass coating technology. It is a proprietary formula, ultra-hydrophobic glass coating that was developed after years of research to offer unmatched glass protection, durability and performance.

As a professional-grade, high performance, poly-siloxane, ultra-hydrophobic coating, PRO 15 durably seals and protects interior and exterior glass against wear, corrosion and degradation from environmental exposure. It was designed to be applied "in-line" by glass manufacturers and covalently bonds to flat glass, quickly and efficiently, to preserve and maintain the glass and prevent costly corrosion, degradation and damage.

- 32 ounce bottle..... UIS54215
- 5 gallon jug UIS54246
- 54 gallon drum..... UIS53067

Features and Benefits:

- Repels Water, Soil, Rust, Acid Rain, Minerals and Pollutants
- Prevents Excess Soiling, Staining & Corrosion
- Prevents Scratches up to 92.9%*
- Makes Cleaning Faster, Easier and More Efficient
- Improves Glass Appearance and Clarity
- Saves Work, Repairs & Replacements
- Eliminates the Need for Chemicals and Abrasives (Green Cleaning Alternative- Use Water Only)
- UV & Abrasion Resistant
- Surfaces: Applicable for all types of glass: Windows, facades, partitions, doors, skylights, atriums, glass block, shower glass, mirrors, windshields and photovoltaic panels.

*Test data available



In partnership with:



LAMINATING SUPPLIES

VISTASAFE™

EVA Interlayer Film

VISTASAFE™ is a series of innovative EVA copolymer-base interlayers developed specifically for the laminated safety glass industry. Made from world class quality EVA resins, VISTASAFE™ is formulated for ease in processability, excellent optical properties, and long term stability.



VS102 Standard

VS102 offers good fluidity, which works well with patterned glass and fabric insert application. It additionally offers high clarity, excellent adhesive strength and long term durability suitable for both interior and exterior applications.

1.8 m x 50 m – 0.76 mm thick – Super Clear Series – Standard EVA-VS102-1.8M
 2.2 m x 50 m – 0.76 mm thick – Super Clear Series – Standard EVA-VS102-2.2M

Additional options available upon request. Contact Salem for more information.



VS103 Premium Architectural

VS103 offers special physical properties, specifically its adhesive, cohesive and tensile strengths, while provides superior optical properties. It is suitable for both interior and exterior architectural applications. It additionally offers ease in operation allowing for lower edge flow-out.

1.3 m x 50 m – 0.76 mm thick – Super Clear Series – Premium Architectural EVA-VS103-1.3M
 1.8 m x 50 m – 0.76 mm thick – Super Clear Series – Premium Architectural EVA-VS103-1.8M
 2.2 m x 50 m – 0.76 mm thick – Super Clear Series – Premium Architectural EVA-VS103-2.2M

Additional options available upon request. Contact Salem for more information.

VS104 – PDLC Lamination

VS104 is engineered for PDLC lamination with good fluidity, excellent adhesive strength and clarity.

Contact Salem for more information.

VS301 & VS401 – Premium Architectural

The White Series offer winter white (VS301) and sandblast (VS401) visuals, allowing for varying degree of privacy.

Contact Salem for more information.

VS601 – Ultra Cool Series

VS601 has high adhesive strength to glass, which allows for long-term durability through year-long weathering impacts. It has high clarity, high light transmission and good impact resistance properties. It also blocks UV and infrared radiation, providing an excellent choice for Energy-Efficient, Temperature -Controlled Buildings.

Contact Salem for more information.



EVA Tape

High-temperature polyester film tape used to mask off areas that don't require coating.

1" x 72 yrd..... PC30-1000
 1-1/2" x 72 yrd..... PC30-1500
 2" x 72 yrd..... PC30-2000
 3" x 72 yrd..... PC30-3000

MATERIAL HANDLING



Wood's Powr-Grip™ Vacuum Hand Cups

Our Wood's Powr-Grip™ (WPG) vacuum hand cups help you move production materials, hard-to-handle appliances and other awkward loads, while protecting the material's surface from damage. These hand-held WPG cups employ the force of atmospheric pressure to grip a surface. A finger-operated vacuum pump removes the air from between the load and the rubber vacuum pad; atmospheric pressure then holds the vacuum cup in place with incredible force. Whatever the job is, you can work with confidence because WPG's patented red-line indicator shows when a vacuum cup is securely attached to the material and will alert you if the vacuum level decreases.



- 8" Flat Vacuum Hand Cup – ABS (plastic) handle – 125 lb capacityGN4000
- 8" Flat Vacuum Hand Cup – metal handle – 125 lb capacityGN4950
- 9" Flat Vacuum Hand Cup – metal handle – 150 lb capacityGN5450
- 10" Concave Vacuum Cup – metal handle – 175 lb capacityGN6450

Salem Fabrication Supplies offers an **exchange service** to keep cups in top operating condition. Regardless of its condition, a cup may be returned to Salem in exchange for a re-manufactured vacuum cup of the same model at a reduced cost (note that the GN4000 ABS handle would be exchanged for E4950 metal handle). This service relies on a continued source of parts to recondition so a re-manufactured vacuum cup is only available in exchange for another cup. Re-manufactured (exchanged) vacuum cups meet exacting factory specifications and pass the same tests as a new product.

EXCHANGE PROGRAM:

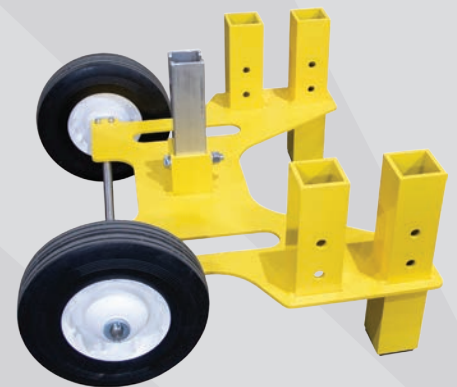
- 8" Flat Vacuum Hand Cup – metal handle – 125 lb capacity..... E4950
- 9" Flat Vacuum Hand Cup – metal handle – 150 lb capacityE5450
- 10" Concave Vacuum Cup – metal handle – 175 lb capacity..... E6450



MRT Dolly

Designed for use with a Wood's Powr-Grip™ model MRT4 or MRTA8 lifter, this option provides an easy way to move the lifter around a job site.

- Lifter and Extension Arm Mounts: Hold equipment in place securely with cotterless hitch pins
- Compact Design: Allows storage of a lifter in tight spaces
- Solid-Core Tires: Hold up to the rigors of regular use and require minimal maintenance – won't go flat!
- Built-In Handles: Make it easier to lift into or out of a vehicle when not in use – the fixed axel can be used as a handle, too



MRT Dolly..... 98790

California Residents:

WARNING Cancer and/or Reproductive Harm – www.p65Warnings.ca.gov

Intelli-Grip™

Employing state-of-the-art technology, Intelli-Grip™, by Wood's Powr-Grip™, automatically monitors vacuum and power systems to:



1. Maximize productivity
2. Help reduce human error
3. Simplify maintenance and repairs
4. Protect employees and property from harm

- Automatic self-testing ensures lifter is ready for use, every lift.
- Color display provides critically relevant information at a glance.
- Anticipates threats and alerts operator beforehand with clearly visible and audible warnings.
- Smart power management enables lifter to work longer on a single charge.
- Continuously monitors battery and prevents lifter from attaching to loads if energy is hazardously low.
- Multiple alarm levels plainly identify the severity of hazards.



Quadra-Tilt™ Rotator 1400 (DC)

In addition to Intelli-Grip™ technology and Wood's Powr-Grip™ innovative Quadra-Tilt™ linkage, this DC-powered vacuum lifter features a dual vacuum system and power loss warning buzzer for added safety, a high-flow vacuum pump and blow-off for greater productivity, and reduced power consumption for extended time on the job site.

The Quadra-Tilt™ vacuum lifters feature an innovative four-bar tilt mechanism that significantly reduces the effort of tilting heavy loads between flat and upright positions. The MRTA811LDC3 vacuum lifter also features Powr-Grip's dual vacuum system, 360° manual rotation, (re)movable vacuum pads and extension arms that accommodate a variety of load sizes and shapes.

This lifter's Dual Vacuum System features two completely independent vacuum circuits, allowing the vacuum lifter to maintain the vacuum level for one circuit even if an unexpected vacuum loss occurs in the other one.

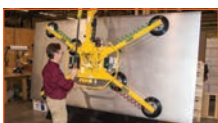


Quadra-Tilt™ Rotator 1400 (DC) w/ Intelli-Grip™ MRTA811LDC3

Low-Profile Manual Rotator/Tilter 1100 (DC)

Along with DC power, a dual vacuum system and Intelli-Grip™ technology, this Powr-Grip™ rotator/tilter features a highly adaptable pad frame and a remarkably low profile, for maximum flexibility in handling loads between buildings and scaffolding or similar tight work locations.

Low Profile Manual Rotator/Tilter 1100 (DC) w/ Intelli-Grip™ MRTALP811LDC3



California Residents:

WARNING Cancer and/or Reproductive Harm – www.p65Warnings.ca.gov

MRT4 Lifter Series

With three frame configurations, 90° tilt and continuous 360° rotation, this Wood's Powr-Grip™ vacuum lifter delivers maximum versatility and range of motion in the shop or at the construction site.

Dual vacuum models are now available with Intelli-Grip™ technology, automatically monitoring vacuum and power systems to maximize safety and efficiency while simplifying maintenance and repairs.

- Rotator/Tilter 500 (DC) MRT49DC
- Rotator/Tilter 700 (DC) MRT411LDC
- Rotator/Tilter 700 (DC) w/ Intelli-Grip™ MRT411LDC3



P1 Lifter Series

In addition to a modular design, this Wood's Powr-Grip™ vacuum lifter provides 180° rotation and 90° tilt, for expandability and a full range of load motion at the installation site or on the shop floor.

Channel Lifters are comprised of one or more Pad Channels and interchangeable Lift Frames for manually rotating and tilting materials. These vacuum lifters may be ordered as complete units or as individual components to expand existing Channel Lifter systems. Lift Frames are available in single-channel or double-channel styles. Pad Channels can be switched from one frame to another in minutes.

Dual vacuum models are now available with Intelli-Grip™ technology, automatically monitoring vacuum and power systems to maximize safety and efficiency while simplifying maintenance and repairs.

- Channel Lifter 700 (DC) P11104DC
- Channel Lifter 700 (DC) w/ Intelli-Grip™ P11104DC3

Low-Profile Manual Rotator/Tilter 1100 (DC) w/ Pad Channel

With a dual vacuum system, 1100 lbs (500 kg) load capacity, removable pad frame extensions and a remarkably low profile, this Wood's Powr-Grip™ rotator/tilter provides maximum versatility and ease of use in tight work locations.

This lifter is now available with Intelli-Grip™ Technology, automatically monitoring vacuum and power systems to maximize safety and efficiency while simplifying maintenance and repairs. Its Dual Vacuum System features two independent air-line circuits to reduce risk of workplace accidents.

- Low-Profile Manual Rotator/Tilter 1100 (DC) w/ Pad Channel and Intelli-Grip™ MRTALPCH611LDC3



California Residents:

WARNING Cancer and/or Reproductive Harm – www.p65Warnings.ca.gov

Manual Rotator/Power Tilter (AC)

Equipped with powered 90° tilt and continuous 360° manual rotation, this Wood's Powr-Grip™ rotator/power tilter features 1000 lbs load capacity and blow-off for quick release (approx. 3 sec.), and can perform 60 tilts per hour (approx. 9 sec. for a 90° tilt).

The MRPT89AC vacuum lifter is shown with optional telescoping pad arms, vacuum loss warning buzzer and individual pad shutoffs.

- Manual Rotator/Power Tilter 1000 (AC) MRPT89AC





GORBEL®

A C L A S S A B O V E

Gorbel® has over 30 years experience providing overhead handling solutions to customers in a wide range of industries. We have a comprehensive line of Crane Technology products, including work station bridge cranes, patented track cranes, I-beam jib cranes, gantries, and work station jib cranes. We also have an exciting line of Ergonomic Lifting products, featuring our G-Force® Intelligent Lifting Device, our Easy Arm® Intelligent Lifting Arm, and our G-Jib®. Finally, our Tether Track™ Fall Arrest Safety Systems provide a turn-key fall protection solution that exceeds OSHA safety standards.

Salem represents the complete line of Gorbel® crane systems.

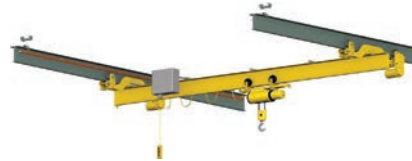
Work Station Bridge Cranes

- Free Standing
- Ceiling Mounted
- Enclosed Track Monorail



Cleveland Tramrail Cranes

- Free Standing Tarca® Systems
- Ceiling Mounted Tarca® Systems
- Cleveland Tramrail® Underhung Systems
- Cleveland Tramrail® Monorails



I-Beam Jib Cranes

- Free Standing
- Mast Type



Enclosed Track Jib Cranes

- Free Standing



Articulated Jib Cranes

- Free Standing
- Ceiling Mounted
- Free Standing PIVOT PRO



Gantry Cranes

- Fixed Height
- Adjustable Height
- Aluminum





Six Wheeled Fabrication Cart

- Heavy duty rubber is mounted on the base and the uprights to help prevent slipping and damage to the material
- Ratchet straps are provided to secure material to the cart
- Heavy duty powder coated finish



3,200 lb capacity
 48" L x 28" W x 47" H FC-48
 82" L x 28" W x 73" H FC-82

Multi-Purpose Glass Storage System

- Store loose lites, insulated glass, tempered glass, plastic sheets, shower doors and more – the center rail with easy slide must be used to support the glass when sliding individual pieces in and out of the racks
- Optional Easy Slide, a low friction material, is mounted to the rails and posts for ease of sliding products in and out
- Outside rails have 2" square holes spaced 4" apart on the top and a steel plate with identical holes is welded and boxed inside the rails, 1" up from the bottom
- 2" square tube posts

OPENINGS	PART#
5 ft 44PAK
10ft.....99PAK
20ft.....1919PAK
50ft.....4949PAK
5 ft 44PAKES
10ft.....99PAKES
20ft.....1919PAKES
50ft.....4949PAKES



Transport Rack

- Designed for transporting and storing product in your shop or on the job
- Fork lift hoops mounted on sides
- Bottom pads and uprights have full length rubber strips
- Quick release mounting pins change the Transport Rack from mobile to stationary in less than a minute with the optional CK-4 Caster Kit
- Hot dip galvanized finish

4,000 lb capacity
 82" L x 44" W x 58" H TR-4482
 96" L x 44" W x 70" H TR-4496
 Optional Caster Kit.....CK-4



*Shown with optional caster kit CK-4

Foldable A-Frame

- Heavy duty powder coated finish
- Ledge Length 20.5"
- 6" spread on top of the "A"



24,000 lb capacity
 60" L x 60" W x 58" H FAF60

Heavy Duty Transport Rack

- Four hold down ratchet straps secure load
- Four adjustable safety posts provide for safe removal of unstrapped loads that may shift unexpectedly
- Safety posts are stored at the end of the A-Frame during transport



10,000 lb capacity
 96" L x 48" W x 88" H TR-10
 Optional caster kit.....CK-8000

Glass Cutting Table

- Plywood will be mounted to the top and bottom shelf
- Two rigid and two swivel brake 5" casters
- Gray powder coat finish
- Shelf height is 16" from the floor

84" L x 48" W x 36" H GCT-4884



Economy Transport Rack

- Fork lift hoops mounted on sides
- Includes hold down straps to secure material to cart
- Bottom pads and uprights have full length rubber strips
- Heavy duty powder coated finish

3,600 lb capacity
 84" L x 36" W x 57" H ETC-8448
 84" L x 35" W x 67" HETC-8460





Heavy Duty Shop Cart

- The HDSC48 uses 5" casters, two rigid and two swivel with brake, rated at 1,000 lbs. each
- Ratchet straps are included to secure load
- Pull handle mounted on one end for maneuverability
- Heavy duty powder coated finish for long lasting durability

4,000 lb capacity
 54" L x 38" W x 48" H..... HDSC48
 84" L x 40" W x 48" H..... HDSC8448
 84" L x 40" W x 72" H..... HDSC8472



Single Sided Shop Cart

- 36" load height
- 7" ledge depth
- 10" diameter semi-pneumatic tires and 5" diameter swivel locking casters
- Neoprene rubber on uprights and base
- Heavy duty powder coated finish

2,000 lb capacity
 40" L x 24" W x 45" H.....SSSC-4036
 40" L x 24" W x 41" H.....BB-40

Fabrication Table

- Rubber is mounted on top and the sides where the carts clamp together
- Two built-in end clamps hold the tables together
- Four heavy duty 5" diameter swivel casters
- Four foot operated locks hold the table in place
- Heavy duty powder coated finish for long lasting durability

600 lb capacity
 60" L x 25" W x 42" HDT2560



Tilt Table Cart

- Four swivel 5" diameter casters
- Four heavy duty foot operated locks prevent movement while fabricating
- Heavy duty powder coated finish

600 lb capacity
 72" L x 32" W x 36" - 42" adj. height..... TT3272

Harp Rack

- Uses thick High Density Polyethylene on the floor for easy sliding of glass and provides a non-stick surface for insulated glass
- Includes 4 non-marking swivel casters rated at 1000 lbs. capacity each
- Two foot locks mounted in front for stability
- Gray powder coated finish

80" W x 48" DHR-4860



Fork Lift Boom

- Boom is designed for use on forklift trucks
- When fully extended, the boom has a reach of 98"

62" L x 22" W x 15" H when retracted &
 102" L x 22" W x 18" H when extended FLB



Glass Slings

- Workloads are rated 9,600 lbs. per sling in a vertical lift
- The inside of slings and horizontal straps are covered with reinforced PVC coated material to help prevent cutting
- Made with 3" wide polyester webbing which minimizes elongation to 3% or less
- Velcro straps prevent slings from shifting on beam when not under load



78" long sling for glass 36" - 54" high..... 78S
 108" long sling for glass 60" - 84" high 108M
 124" long sling for glass 72" - 100" high 124L
 160" long sling for glass 130" - 204" high..... 160J



Winlet Glass Manipulators

The Winlet family of glass manipulators is known for their innovation and reliability in vacuum glass handling technology. As the first and original vacuum glass manipulator on the market, Winlet sets the standard for efficiency and safety.

Contact Salem for a full list of our Winlet offerings.

Winlet 880c

The 880c is a highly compact and versatile glass manipulator designed for both indoor and outdoor applications. As the slimmest model in the Winlet lineup, the 880c is engineered to navigate through narrow spaces, including standard-sized doorways, making it an optimal solution for environments with limited access.

880 lb capacity
 Compact – Hydraulic Rotation – Multi-Function Controller WINLET-800C
 Additional options available. Contact Salem for more information.

Winlet 915

The 915 is an advanced glass manipulator engineered for challenging indoor and outdoor installations. Its design combines stability, reach, and precision, making it an ideal choice for various industries such as construction, glazing, and maintenance.

915 lb capacity
 Hydraulic Rotation – Multi-Function Controller WINLET-915-HR-MFC
 Additional options available. Contact Salem for more information.

Winlet 1265

The 1265 is a high-capacity glass manipulator designed for demanding indoor and outdoor installations. Known for its impressive lifting power and advanced control systems, the Winlet 1265 is ideal for industries such as construction, glazing, and maintenance where heavy-duty handling and precision are crucial.

1,265 lb capacity
 Self-Propelled – Twin Wheels WINLET-1265-M2
 Additional options available.
 Contact Salem for more information.

Winlet 2200

The 2200 is a powerful and highly versatile glass manipulator designed to handle the heaviest loads in the most demanding environments. Engineered with precision and built for strength, this model is ideal for large-scale construction projects, glazing installations, and industrial applications where lifting capacity and stability are paramount.

2,200 lb capacity
 Self-Propelled – Twin Wheels WINLET-2200
 Additional options available.
 Contact Salem for more information.

Winlet Lasius

The Lasius is a compact, yet powerful pick-and-carry crane designed to handle a wide range of heavy lifting tasks with exceptional efficiency and precision. Named after the small but incredibly strong Lasius ant, this crane lives up to its name by offering impressive lifting capacity within an ultra-compact design, making it ideal for both industrial and construction applications.

1,950 lb capacity
 Pick and Carry Crane WINLET-LASIU-1950
2,200 lb capacity
 Pick and Carry Crane WINLET-LASIU-2200
 Additional options available.
 Contact Salem for more information.



Pro-Dolly™ HD1

Effortlessly portable and maneuverable, this low-profile dolly is your perfect grab-and-go solution for navigating both shop floors and doorways with ease.

- **Perfect for:** Transportation of single panels of frameless glass.
- **Exceptional Stability:** Equipped with four non-marking, flat free tires that absorb shocks.
- **Secure Clamping, Worry-Free:** Simply tighten the clamp and leave the pane securely positioned on flat surfaces.

22" x 11" x 9" PDHD1



Pro-Cart AT1

Easily traverse curbs, stairs, and challenging terrains like gravel or lawns while transporting frameless glass panels with this versatile all-terrain cart.

- **Perfect for:** Effortlessly moving multiple frameless glass panes.
- **Construction Site Pro:** Transport from an A-frame to the jobsite without concerns about the terrain.
- **Ample Ground Clearance:** Effortlessly clear curbs, door frames, stairs, and rest securely on stair treads.

60" x 21" x 21" PCAT1-14



Terra Trek™ Glass Cart

Boasting a remarkable 750 lb weight capacity, you can overcome uneven terrain and unfinished driveways; conquer curbs and stairs; glide over lawns, dirt, and gravel with the Terra Trek™ Glass Cart.

- **Perfect for:** Transporting framed glass across rough terrain at job sites.
- **Panel Protection:** Adjustable width, clamp vise jaws for precise control.
- **Secure Transport:** EZ Glide™ Strap with Stop Blocks included for added security when transporting tall panels.

40" x 22" x 15.5" TTGC-23



EZ Glide™ Glass Dolly

Extremely stable and easy-to-maneuver with a whopping 750 lb weight capacity, the EZ Glide™ Glass Dolly provides unparalleled ease of movement and precision in the shop and at the job site.

- **Perfect for:** Quickly transporting framed glass and windows around your shop or on commercial job sites.
- **Extremely Stable:** Adjustable guide rails keep the glass panel stable and easy-to-maneuver.
- **Low Profile:** Provides more height clearance through doorways.
- **Secure Transport:** EZ Glide™ Strap with Stop Blocks included for added security when transporting tall panels.

26.25" x 21.75" x 10.5" EZGD-23



Aqua-Jaw™ Carry Vise™

Elevate your glass lifting and handling experience with this all-weather carry clamp, a revolutionary solution designed for safe, efficient, and ergonomic glass transportation across any terrain.

- **Perfect for:** Carrying heavy glass panels upstairs and other slanted or challenging terrains.
- **Back Friendly:** Lifts material ergonomically, protecting your spine when carrying heavy panels.
- **No suction:** Mechanical design eliminates the potential of losing suction that comes with vacuums..

16" x 10" x 7" (each, closed) AJ-128-15



Pro-Stealth Seamer™ manual

An essential tool for seamlessly joining and leveling glass surfaces, eliminating the need for waiting until adhesive is cured to start cleaning up, and ensuring consistently invisible seams.

- **Perfect for:** Bringing glass panels together in a frame.
- **Easy to Use:** No readjusting and no need for ratchet straps.
- **Versatile:** Place Pro-Stealth at an angle to make glass panels level so you can shim underneath.
- **Adjustable:** Move the panels up/down, forward/back, or bring them together.
- **Accessible:** Entire seam is visible while the product is in use.

20" x 9" x 4" 8129-PSM-19

SALEM

FABRICATION TECHNOLOGIES GROUP

SALEM
FABRICATION SUPPLIES

HHH
EQUIPMENT
Resources

With sales and technical teams that span across the USA, Canada and Mexico,
Salem Fabrication Technologies Group, Inc. helps you
GO BEYOND THE EDGE



▲ Regional Sales Offices



North Carolina – HQ

5901 Gun Club Road
Winston-Salem, NC 27103
Office: 800.234.1982 | 336.766.1104



California

10125 Shoemaker Avenue
Santa Fe Springs, CA 90670
Office: 800.445.6339 | 562.944.6155



Pennsylvania

2330 Greensburg Road
New Kensington, PA 15068
Office: 724.212.3749



Washington

3801 NE 109th Ave, Suite C
Vancouver, WA 98682
Office: 360.993.5644



Ontario – Canada

Greater Toronto Area
Office: 844.858.7444
www.SalemFTG.com

Salem Fabrication Supplies and HHH Equipment Resources are divisions of Salem Fabrication Technologies Group, Inc. | We Are 100% Employee Owned